

**gibco**



Gibco sera —  
recognized leader in quality\*

For performance and consistency  
essential to successful cell culture

**ThermoFisher**  
SCIENTIFIC



We're dedicated to providing you with the right fetal bovine serum (FBS) for your specific cell culture needs and lab budget.

# Contents



A history of quality and innovation 5

---

Delivering quality in every bottle 7

---

Why Gibco sera 8

---

The right sera for all your cell culture needs 10

---

Quality control tests 12

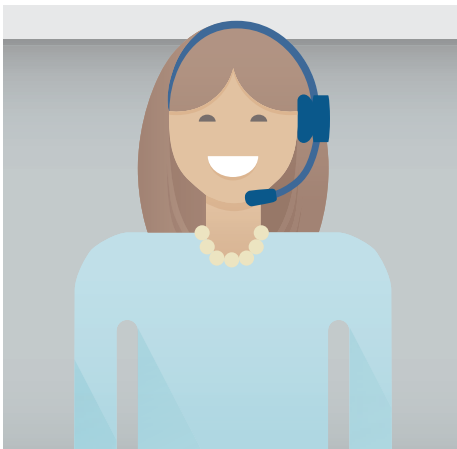
---

Sera from other animals 14

---

Ordering information 16

---





# Gibco sera— unassailable quality\*

## A history of innovation

In 1962, Leonard Hayflick made the important discovery that there is a finite capacity for normal human cells to replicate in culture. This finding overturned a long-held belief about the potential immortality of cultured cells and has had far-reaching implications in life science research. That same year, Bob and Earline Ferguson, two biologists working from their garage in Grand Island, New York, recognized the business potential of supplying animal sera for research use. From this humble beginning, Gibco™ sera rose to the forefront of products supporting global life science research. The Gibco brand is now an important part of Thermo Fisher Scientific.

How did the Gibco brand become the world leader for sera, media, and reagents? The key to this success has always been consistent delivery of quality products that reduce the number of unknowns scientists may experience in their work.

Throughout the global life science community, Gibco products have a reputation for reliability—allowing scientists to focus on more important things than troubleshooting cell culture problems. In addition to supporting leading-edge life science research, Thermo Fisher Scientific is a leading supplier to the global biopharmaceutical industry. Part of our success is due to our strong commitment to both small and large laboratories, ranging from the research bench to production-scale facilities.

The original Gibco product manufacturing site located in Grand Island, New York, is now just one of many manufacturing facilities worldwide that make Gibco cell culture products. Through our unwavering commitment to quality, we continue to provide scientists with the consistent reliability, service, value, and innovation that have made Gibco products a global market leader for over 50 years.

\* According to a 2013 Percepta study.



# Delivering quality in every bottle

## Serum collection and processing methods can affect the quality of the final product

For over 50 years, Gibco cell culture products have set the global standard for quality and performance.\* As the world's leading supplier of sera, we add value to each product through all stages of collection, processing, filtration, testing, and delivery, using stringent process controls and the highest quality standards.

Processed lots of Gibco FBS are:

- Never blended with FBS from other countries or origins
- Manufactured in the country of origin, where applicable, to ensure product integrity and to avoid the risk of cross-contamination
- Processed and tested according to cGMP requirements

We maintain rigorous control of every step in the production of Gibco FBS and all of our sera products. Complete vertical integration, from collection to final product, minimizes the risk of contamination with adventitious agents, improves lot-to-lot consistency, and results in superior performance.

We manufacture in compliance with the Food and Drug Administration's (FDA's) Quality System Regulation (cGMP) at our ISO 13485 facility in the US and our ISO 9001 facilities in Australia and New Zealand. Comprehensive documentation provides traceability and control of our processes. Also, Gibco sera have recently undergone a rigorous process

to obtain International Serum Industry Association (ISIA) traceability certification (Figure 1). This certification provides you with peace of mind and the confidence that Gibco sera are manufactured under the highest traceability standards, offering quality and performance for your research.

### What does traceability certification mean?

- We maintain records of traceability from origin throughout the supply chain for all serum batches
- We maintain the history for both quality and quantity of material, from point of collection through final processing
- We retain documentation to support all stages of processing, transportation, and commercial transactions

Using aseptic cardiac puncture procedures, we collect fetal bovine blood in single-use bags specifically designed to improve clotting efficiency and serum yield. We then quickly refrigerate the raw material, separating, evaluating, and filtering it according to our stringent specifications. A typical FBS batch size is 1,000–1,600 L; some sources permit batch sizes up to 2,000 L, depending on the manufacturing site. Following final filtration (to triple 0.1 micron), which removes bacteria without removing critical serum components, we aseptically dispense the serum into sterile bottles. We then label and freeze the final product and place it on quarantined status until all quality control tests have been completed. Our Process Engineering department fully validates procedures and processes to ensure quality and reproducibility. Our Quality Systems department can trace the raw serum back to the donor farm or abattoir where it was collected. Only serum that meets all of our particular manufacturing and finished-product specifications is approved for sale.



Figure 1. Effective February 12, 2014, our sera products are ISIA Traceability Certified.

\* According to a 2013 Percepta study.

# See why Gibco sera are recommended

**1960** **1<sup>st</sup>** **GIBCO SERA ARE THE FIRST IN THE WORLD TO BE MANUFACTURED FOR SCIENTIFIC RESEARCH**

**1970** Gibco sera have been part of important breakthroughs for >50 years


**1980** **HEK 293 cell line**  
Frank L. Graham generated an immortalized cell line now used extensively as an expression tool.<sup>1</sup>

**1990** **Mouse embryonic stem cells**  
Gail R. Martin extracted stem cells from mouse embryos, and coined the term “embryonic stem cell.”<sup>2</sup>

**Dolly the sheep**  
Dolly, the first mammal cloned from an adult somatic cell, ignited the embryonic stem cell research field.<sup>3</sup>

## THE GIBCO BRAND IS BACKED BY ...

### SUPERIOR QUALITY

Up to **65**   
quality tests per batch

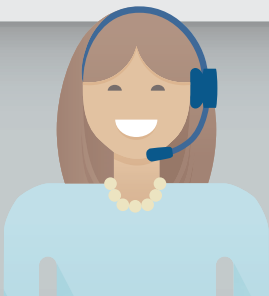
>**100**   
customer audits yearly



Awarded the International Serum Industry Association (ISIA) traceability certification in February 2014

Total control from collection to manufacturing

### EXCELLENT CUSTOMER SERVICE



>70,000 customers supported by dedicated FBS specialists in North America and Europe

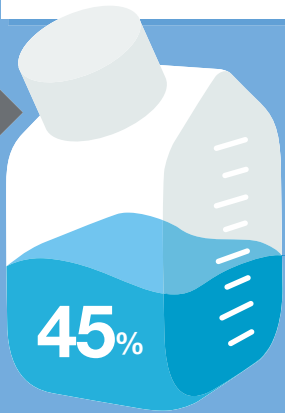


Award-winning technical and customer service teams



# most by scientists worldwide\*

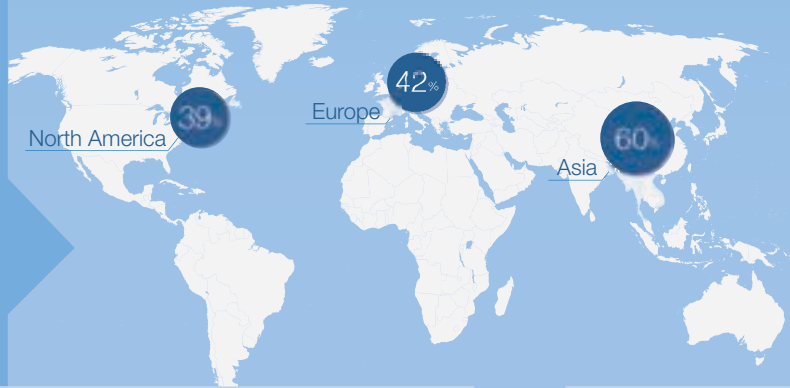
GIBCO SERA ARE THE MOST CITED SERA IN GLOBAL SCIENTIFIC JOURNALS



accounting for 45% of all FBS citations\*\*

>107,000 citations and counting

Across the globe, Gibco sera account for the highest percentage of citations compared to any other serum brand\*\*



IT'S ALSO THE MOST TRUSTED SERUM BRAND

Used by 14 of the top 15 pharma companies



## A COMMITMENT TO INNOVATION



### The right design

Ergonomic bottle makes pipetting easier



### The right tools

Gibco™ iMATCH™ Sera Lot Matching Tool: Find our most consistent, highest-performing serum lot available, without having to test



### The right size

50 mL Gibco™ One Shot™ FBS† is ideal for ease of use and convenience

If you want proven quality, performance, and consistency, go with Gibco sera.

\*According to a 2013 Percepta study. \*\*From 2006–2013. †One Shot FBS is not available in all regions.

#### References:

1. Graham FL, Smiley J, Russell WC, Nairn R (1977) Characteristics of a human cell line transformed by DNA from human adenovirus type 5. *J. Gen. Virol.* 36 (1): 59-74.
2. Martin G (1981) Isolation of a pluripotent cell line from early mouse embryos cultured in medium conditioned by teratocarcinoma stem cells. *Proc Natl Acad Sci USA* 78 (12): 7634-8.
3. Wilmut I, Schnieke AE, McWhir J, Kind AJ, Campbell KH (1997) Viable offspring derived from fetal and adult mammalian cells. *Nature* 385 (6619): 810-3.

# The right sera for all your cell culture needs

Gibco sera help meet your research needs and budget requirements, offering the best value for basic cell culture, specialty research, and specific assays

| Gibco serum category <sup>‡</sup>   | Standard   | Performance  |
|---|--|--|
|   | Sera for cell culture with robust cell lines—excellent value for basic research        | Low-endotoxin sera for general cell culture with common cell lines         |
| <b>Recommended products</b>   | FBS Qualified, USDA-approved origins, South America, Canada                            | FBS Qualified, US  |
| <b>Endotoxin specification/standard</b>   | Typically ≤50 EU/mL  | ≤10 EU/mL  |
| <b>Quality and performance testing (including standard tests: growth, cloning, plating)</b> | Standard testing   | Standard testing, plus exclusive BVDV screening of raw material (FBS)      |
| <b>Popular catalog numbers/standard</b>   | 10437028 FBS Qualified, USDA-approved origins<br>10270106 FBS Qualified, South America | 26140079 FBS Qualified, US<br>16140071 FBS Qualified, heat inactivated, US |

<sup>‡</sup> All products may not be available in all regions due to importation regulations. Contact your local sales representative regarding product availability in your country.

<sup>§</sup> All Secure sera can be gamma irradiated upon request to comply with EU and US regulations and guidelines.

**Gain more control over your research with our specialty products. We have sera qualified for specialty research and specific assays, including stem cell research, immunoassays, antibodies, and more.**

| Product                      | Description/usage guidelines   |
|------------------------------|--|
| <b>Dialyzed FBS</b>          | <ul style="list-style-type: none"> <li>Dialyzed by tangential flow filtration utilizing 10,000 MW cutoff filters</li> <li>Performance tested for cloning and plating efficiency</li> <li>Ideal for metabolic assays</li> </ul>   |
| <b>Ultra-Low IgG FBS</b>     | <ul style="list-style-type: none"> <li>IgG levels are less than 5 µg/mL, and the BVD antibody titer is low or not detectable</li> <li>Suitable for antibody production and veterinary applications</li> </ul>  |
| <b>ES Cell Qualified FBS</b> | <ul style="list-style-type: none"> <li>Specially tested for the ability to sustain undifferentiated cellular morphology of embryonic stem cells</li> <li>Crucial for the successful maintenance of embryonic stem cells</li> </ul>   |
| <b>MSC Qualified FBS</b>     | <ul style="list-style-type: none"> <li>Performance tested using standard 14-day MSC CFU-f assay</li> <li>Each lot is tested against an in-house FBS reference standard using cells from a master cell bank of MSCs from normal bone marrow donors. This helps ensure lot-to-lot performance consistency</li> </ul> |
| <b>Charcoal Stripped FBS</b> | <ul style="list-style-type: none"> <li>Reduced lot-to-lot variability on hormone levels, which helps eliminate some of the influences steroids and other components have on cells</li> <li>Ideal for customers performing cell culture assays on hormone- and lipid-related research</li> </ul>                    |
| <b>Exosome-Depleted FBS</b>  | <ul style="list-style-type: none"> <li>≥90% of exosomes depleted</li> <li>Complex manufacturing process that retains the nutrients your cells need</li> <li>Full quality testing for sterility, mycoplasmas, performance, and endotoxins</li> </ul>  |

We provide the most cited brand of sera in global scientific journals

| Performance Plus  | Secure <sup>§</sup>   | Specialty   |
|---|---|---|
| Lowest-endotoxin and most highly characterized sera. Good for broad range of cell types, especially sensitive cell lines        | Sera sourced from BSE-negligible regions for preclinical, industrial, and academic research applications requiring low risk     | Sera qualified for specialty research and specific assays, including stem cell research, immunoassays, antibodies, and others |
| FBS Certified, US   | FBS Qualified, Australia<br>FBS Qualified, New Zealand<br>DBS, New Zealand  | FBS and other sera for specialty research and assays  |
| ≤5 EU/mL  | ≤10 EU/mL for FBS, donor bovine sera  | Per Certificate of Analysis   |
| Standard testing, plus analytical tests for hormone and biochemical profiles and exclusive BVDV screening of raw material (FBS) | Standard testing, plus exclusive BVDV screening of raw material (FBS) or donor animals (DBS)                                    | Standard testing, plus exclusive BVDV screening of raw materials (FBS) or donor animals (DBS) prior to final manufacturing    |
| 16000044 FBS Certified, US<br>10082147 FBS Certified, heat inactivated, US  | 10099141 FBS Qualified, Australia<br>10100147 FBS Qualified, heat inactivated, Australia<br>10091148 FBS Qualified, New Zealand | 16141079 FBS ES Cell Qualified, US<br>12676029 FBS, Charcoal Stripped, USDA-approved origins                                  |



# Quality control tests

We perform these quality control tests on each production lot, depending on the use of sera

Table 1. FBS quality control tests.

| Test                                       | Standard                                   |  | Performance        |  | Performance Plus   |
|--|--|--|--------------------|--|--------------------|
|  | Qualified<br>12483, 10437,<br>10270, 10106 | Qualified<br>Heat-Inactivated<br>12484, 10438,<br>10500, 10108 | Qualified<br>26140 | Qualified<br>Heat-<br>Inactivated<br>16140 | Certified<br>16000 |
| Bacteriophage tested                       |  |  |                    |  | ☑                  |
| Biochemical profile                        | ☑ <sup>6</sup>                             | ☑ <sup>6</sup>   |                    |  | ☑                  |
| Bovine IgG (<5 µg/mL)                      |  |  |                    |  |                    |
| Determination of % oxy Hb (>70%)           |  |  |                    |  | ☑                  |
| Electrophoretic pattern                    | ☑  | ☑  | ☑                  | ☑  | ☑                  |
| Endotoxin (EU/mL)                          | ☑  | ☑  | ☑                  | ☑  | ☑                  |
| ES cell performance assays                 |  |  |                    |  |                    |
| MSC CFU-f assay                            |  |  |                    |  |                    |
| Glucose (<5 µg/mL)                         |  |  |                    |  |                    |
| Hemoglobin (mg/dL)                         | ☑  | ☑  | ☑                  | ☑  | ☑                  |
| Hormone profile                            | ☑ <sup>6</sup>                             | ☑ <sup>6</sup>   |                    |  | ☑                  |
| Mycoplasmas                                | ☑  | ☑  | ☑                  | ☑  | ☑                  |
| Osmolality                                 | ☑  | ☑  | ☑                  | ☑  | ☑                  |
| Performance tested                         | ☑  | ☑  | ☑                  | ☑  | ☑                  |
| pH   | ☑  | ☑  | ☑                  | ☑  | ☑                  |
| Sf9 cell assay                             | ☑ <sup>2</sup>                             | ☑ <sup>2</sup>   | ☑ <sup>2</sup>     | ☑ <sup>2</sup>                             | ☑                  |
| Sterility testing (bacteria/fungi)         | ☑  | ☑  | ☑                  | ☑  | ☑                  |
| Tetracycline††                             | ☑ <sup>3</sup>                             | ☑ <sup>3</sup>   | ☑ <sup>3</sup>     | ☑ <sup>3</sup>                             |                    |
| Total protein                              | ☑  | ☑  | ☑                  | ☑  | ☑                  |
| <b>Viral testing</b>                       |  |  |                    |  |                    |
| Akabane virus                              |  |  |                    |  |                    |
| Bluetongue virus                           | ☑ <sup>4</sup>                             | ☑ <sup>4</sup>   | ☑                  | ☑  | ☑                  |
| Bovine adenovirus FA                       | ☑ <sup>4</sup>                             | ☑ <sup>4</sup>   | ☑                  | ☑  | ☑                  |
| Bovine parvovirus FA                       | ☑ <sup>4</sup>                             | ☑ <sup>4</sup>   | ☑                  | ☑  | ☑                  |
| Bovine respiratory syncytial virus FA      | ☑ <sup>4</sup>                             | ☑ <sup>4</sup>   | ☑                  | ☑  | ☑                  |
| Bovine viral diarrhea virus FA             | ☑  | ☑  | ☑                  | ☑  | ☑                  |
| Bovine viral diarrhea neutralization assay |  |  |                    |  |                    |
| Cytopathic agents (e.g., IBR)              | ☑  | ☑  | ☑                  | ☑  | ☑                  |
| Hemadsorbing agents (e.g., PI3)            | ☑  | ☑  | ☑                  | ☑  | ☑                  |
| Reovirus FA                                | ☑ <sup>4</sup>                             | ☑ <sup>4</sup>   | ☑                  | ☑  | ☑                  |
| Rabies virus FA                            | ☑ <sup>4</sup>                             | ☑ <sup>4</sup>   | ☑                  | ☑  | ☑                  |

1. Indicates testing performed on Australian-sourced product (10099, 10100, 12664) sold in the US.

2. Sf9 testing performed on selected lots of 26140, 16140, 10437, 10438, 10099, 10100.

3. Indicates testing performed on US and USDA-approved (26140, 10437) sources only.

4. Excludes South American origins.

5. Estradiol testing only.

6. Indicates testing performed on Canadian-sourced product (12483, 12484).

7. Indicates testing performed on US-sourced (16250) only.

†† Test was added in January 2006.

Up to 65  
quality tests  
per batch

| Certified Heat-Inactivated 10082 | Secure                 |   | Specialty      |                               |                         |                                |                            |                                     |
|----------------------------------|------------------------|---|----------------|-------------------------------|-------------------------|--------------------------------|----------------------------|-------------------------------------|
|                                  | Qualified 10099, 10091 | Qualified Heat-Inactivated 10100, 10093 | Dialyzed 26400 | Ultra-Low IgG 16250, 192-1005 | Charcoal Stripped 12676 | ES Cell-Qualified 16141, 10439 | MSC Qualified 12662, 12664 | Exosome-Depleted A25904DG, A2720801 |
| ✓                                | ✓ <sup>1</sup>         | ✓ <sup>1</sup>                          |                |                               |                         |                                | ✓ <sup>1</sup>             |                                     |
| ✓                                | ✓ <sup>1</sup>         | ✓ <sup>1</sup>                          |                |                               |                         |                                | ✓ <sup>1</sup>             |                                     |
|                                  |                        |   |                | ✓                             |                         |                                |                            |                                     |
| ✓                                | ✓ <sup>1</sup>         | ✓ <sup>1</sup>                          |                |                               |                         |                                | ✓ <sup>1</sup>             |                                     |
| ✓                                | ✓                      | ✓                                       | ✓              | ✓                             | ✓                       | ✓                              | ✓                          |                                     |
| ✓                                | ✓                      | ✓                                       | ✓              | ✓                             | ✓                       | ✓                              | ✓                          | ✓                                   |
|                                  |                        |   |                |                               |                         | ✓                              |                            |                                     |
|                                  |                        |   | ✓              |                               |                         |                                | ✓                          |                                     |
| ✓                                | ✓                      | ✓                                       | ✓              | ✓                             | ✓                       | ✓                              | ✓                          | ✓                                   |
| ✓                                | ✓ <sup>1</sup>         | ✓ <sup>1</sup>                          |                |                               | ✓ <sup>5</sup>          |                                | ✓ <sup>1</sup>             |                                     |
| ✓                                | ✓                      | ✓                                       | ✓              | ✓                             | ✓                       | ✓                              | ✓                          | ✓                                   |
| ✓                                | ✓                      | ✓                                       | ✓              | ✓                             | ✓                       | ✓                              | ✓                          | ✓                                   |
| ✓                                | ✓                      | ✓                                       | ✓              | ✓                             | ✓                       | ✓                              | ✓                          | ✓                                   |
| ✓                                | ✓                      | ✓                                       | ✓              | ✓                             | ✓                       | ✓                              | ✓                          | ✓                                   |
| ✓                                | ✓ <sup>2</sup>         | ✓ <sup>2</sup>                          |                |                               |                         |                                | ✓ <sup>1</sup>             |                                     |
| ✓                                | ✓                      | ✓                                       | ✓              | ✓                             | ✓                       | ✓                              | ✓                          | ✓                                   |
|                                  |                        |   |                |                               |                         |                                |                            | ✓                                   |
| ✓                                | ✓                      | ✓                                       | ✓              | ✓                             | ✓                       | ✓                              | ✓                          | ✓                                   |
|                                  |                        |   |                |                               |                         |                                |                            |                                     |
|                                  | ✓ <sup>1</sup>         | ✓ <sup>1</sup>                          |                |                               |                         |                                | ✓ <sup>1</sup>             |                                     |
| ✓                                | ✓                      | ✓                                       | ✓              | ✓                             | ✓                       | ✓                              | ✓                          | ✓                                   |
| ✓                                | ✓                      | ✓                                       | ✓              | ✓                             | ✓                       | ✓                              | ✓                          | ✓                                   |
| ✓                                | ✓                      | ✓                                       | ✓              | ✓                             | ✓                       | ✓                              | ✓                          | ✓                                   |
| ✓                                | ✓                      | ✓                                       | ✓              | ✓                             | ✓                       | ✓                              | ✓                          | ✓                                   |
| ✓                                | ✓                      | ✓                                       | ✓              | ✓                             | ✓                       | ✓                              | ✓                          | ✓                                   |
|                                  |                        |   |                | ✓ <sup>7</sup>                |                         |                                |                            |                                     |
| ✓                                | ✓                      | ✓                                       | ✓              | ✓                             | ✓                       | ✓                              | ✓                          | ✓                                   |
| ✓                                | ✓                      | ✓                                       | ✓              | ✓                             | ✓                       | ✓                              | ✓                          | ✓                                   |
| ✓                                | ✓                      | ✓                                       | ✓              | ✓                             | ✓                       | ✓                              | ✓                          | ✓                                   |
| ✓                                | ✓                      | ✓                                       | ✓              | ✓                             | ✓                       | ✓                              | ✓                          | ✓                                   |

# Sera from other animals

Includes horse and goat sera, as well as many others predominantly sourced from New Zealand

Table 2. Other serum quality control tests.

| Test                                       | Newborn Calf Serum 16010 | Newborn Calf Serum Heat-Inactivated 26010 | Bovine Serum 16170 | Bovine Serum Heat-Inactivated 26170 | Donor Bovine Serum 16030 |
|--|--------------------------|---|--------------------|-------------------------------------|--------------------------|
| Cytotoxicity assay                         |                          |   |                    |                                     |                          |
| Electrophoretic pattern                    | ✓                        | ✓   | ✓                  | ✓                                   | ✓                        |
| Endotoxin (EU/mL)                          | ✓                        | ✓   | ✓                  | ✓                                   | ✓                        |
| Hemoglobin (mg/dL)                         | ✓                        | ✓   | ✓                  | ✓                                   | ✓                        |
| Mycoplasmas                                | ✓                        | ✓   | ✓                  | ✓                                   | ✓                        |
| Osmolality                                 | ✓                        | ✓   | ✓                  | ✓                                   | ✓                        |
| pH   | ✓                        | ✓   | ✓                  | ✓                                   | ✓                        |
| Sp2 performance assay                      |                          |   |                    |                                     |                          |
| Sterility testing (bacteria/fungi)         | ✓                        | ✓   | ✓                  | ✓                                   | ✓                        |
| Total protein                              | ✓                        | ✓   | ✓                  | ✓                                   | ✓                        |
| Vero performance assay                     | ✓                        | ✓   | ✓                  | ✓                                   | ✓                        |
| <b>Viral testing</b>                       |                          |   |                    |                                     |                          |
| Bluetongue virus                           | ✓                        | ✓   | ✓                  | ✓                                   | ✓                        |
| Bovine adenovirus FA                       | ✓                        | ✓   | ✓                  | ✓                                   | ✓                        |
| Bovine parvovirus FA                       | ✓                        | ✓   | ✓                  | ✓                                   | ✓                        |
| Bovine respiratory syncytial virus FA      | ✓                        | ✓   | ✓                  | ✓                                   | ✓                        |
| Bovine viral diarrhea virus FA             | ✓                        | ✓   | ✓                  | ✓                                   | ✓                        |
| Cytopathic agents                          | ✓                        | ✓   | ✓                  | ✓                                   | ✓                        |
| EIA Coggins                                |                          |   |                    |                                     |                          |
| Equine herpes virus                        |                          |   |                    |                                     |                          |
| Equine viral arteritis                     |                          |   |                    |                                     |                          |
| Hemadsorbing agents                        | ✓                        | ✓   | ✓                  | ✓                                   | ✓                        |
| Porcine adenovirus                         |                          |   |                    |                                     |                          |
| Porcine hemagglutinating encephalomyelitis |                          |   |                    |                                     |                          |
| Porcine parvovirus                         |                          |   |                    |                                     |                          |
| Rabies FA                                  | ✓                        | ✓   | ✓                  | ✓                                   | ✓                        |
| Reovirus FA                                | ✓                        | ✓   | ✓                  | ✓                                   | ✓                        |
| Transmissible gastroenteritis virus        |                          |   |                    |                                     |                          |



## Ordering information<sup>‡‡</sup>

| <b>Standard</b>               |                       | <b>Gibco sera for cell culture with robust cell lines</b>   |   |                            |
|-------------------------------|-----------------------|---|---|----------------------------|
|                               | <b>Origin</b>         | <b>Cat. No.</b>   | <b>Size</b>   | <b>Additional offering</b> |
| Fetal Bovine Serum, Qualified | USDA-approved regions | 10437010  | 100 mL  |                            |
|                               |                       | 10437028  | 500 mL  |                            |
|                               |                       | 10437036  | 1,000 mL  |                            |
|                               |                       | 10437077  | 50 mL   | One Shot                   |
|                               |                       | 10437085  | 40 x 50 mL  | One Shot                   |
|                               |                       | 10438018  | 100 mL  | Heat inactivated           |
|                               |                       | 10438026  | 500 mL  | Heat inactivated           |
|                               |                       | 10438034  | 1,000 mL  | Heat inactivated           |
|                               | South America         | 10270098  | 100 mL  |                            |
|                               |                       | 10270106  | 500 mL  |                            |
|                               |                       | 10499036  | 100 mL  |                            |
|                               |                       | 10499044  | 500 mL  | Heat inactivated           |
|                               |                       | 10500056  | 100 mL  | Heat inactivated           |
|                               |                       | 10500064  | 500 mL  | Heat inactivated           |
|                               |                       | 12657029 <sup>§§</sup>  | 500 mL  |                            |
|                               | Canada                | 12483012 <sup>§§</sup>  | 100 mL  |                            |
|                               |                       | 12483020 <sup>§§</sup>  | 500 mL  |                            |
|                               |                       | 12484010 <sup>§§</sup>  | 100 mL  | Heat inactivated           |
|                               |                       | 12484028 <sup>§§</sup>  | 500 mL  | Heat inactivated           |
|                               | <b>Performance</b>    |   | <b>Gibco low-endotoxin sera for general cell culture with common cell lines</b> |                            |
|                               | <b>Origin</b>         | <b>Cat. No.</b>   | <b>Size</b>   | <b>Additional offering</b> |
| Fetal Bovine Serum, Qualified | United States         | 26140087  | 100 mL  |                            |
|                               |                       | 26140079  | 500 mL  |                            |
|                               |                       | 26140095  | 1,000 mL  |                            |
|                               |                       | 26140111  | 50 mL   | One Shot                   |
|                               |                       | 26140129  | 40 x 50 mL  | One Shot                   |
|                               |                       | 16140063  | 100 mL  | Heat inactivated           |
|                               |                       | 16140071  | 500 mL  | Heat inactivated           |
|                               |                       | 16140089  | 1,000 mL  | Heat inactivated           |
| <b>Performance Plus</b>       |                       | <b>Gibco lowest-endotoxin sera with hormone and biochemical profiles. For a broad range of cell types, including sensitive cell lines</b> |   |                            |
|                               | <b>Origin</b>         | <b>Cat. No.</b>   | <b>Size</b>   | <b>Additional offering</b> |
| Fetal Bovine Serum, Certified | United States         | 16000036  | 100 mL  |                            |
|                               |                       | 16000044  | 500 mL  |                            |
|                               |                       | 16000069  | 1,000 mL  |                            |
|                               |                       | 16000077  | 50 mL   | One Shot                   |
|                               |                       | 16000085  | 40 x 50 mL  | One Shot                   |
|                               |                       | 10082139  | 100 mL  | Heat inactivated           |
|                               |                       | 10082147  | 500 mL  | Heat inactivated           |

<sup>‡‡</sup> All products may not be available in all regions due to importation regulations. Contact your local sales representative regarding product availability in your country.

<sup>§§</sup> For Research Use Only. Not for use in diagnostic procedures.



## Ordering information<sup>††</sup>

| Secure                        |             | Gibco sera sourced exclusively from BSE-free regions, with low endotoxin, for cell culture requiring lowest viral risk |          |                     |                  |
|-------------------------------|-------------|--|----------|---------------------|------------------|
|                               | Origin      | Cat. No.   | Size     | Additional offering |                  |
| Fetal Bovine Serum, Qualified | Australia   | 10099133   | 100 mL   |                     |                  |
|                               |             | 10099141   | 500 mL   |                     |                  |
|                               |             | 10099158   | 1,000 mL |                     |                  |
|                               |             | 10100139   | 100 mL   | Heat inactivated    |                  |
|                               |             | 10100147   | 500 mL   | Heat inactivated    |                  |
|                               |             | 10100154   | 1,000 mL | Heat inactivated    |                  |
|                               | New Zealand | 10091130   | 100 mL   |                     |                  |
|                               |             | 10091148   | 500 mL   |                     |                  |
|                               |             | 10091155   | 1,000 mL |                     |                  |
|                               |             | 10093136   | 100 mL   | Heat inactivated    |                  |
|                               |             | 10093177   | 500 mL   | Heat inactivated    |                  |
| Newborn Calf Serum            | New Zealand | 16010167   | 100 mL   |                     |                  |
|                               |             | 16010159   | 500 mL   |                     |                  |
|                               |             | 16010142   | 1,000 mL |                     |                  |
|                               |             | 26010066   | 100 mL   | Heat inactivated    |                  |
|                               |             | 26010074   | 500 mL   | Heat inactivated    |                  |
|                               |             | Bovine Serum   | 16170086 | 100 mL              |                  |
|                               |             |  | 16170078 | 500 mL              |                  |
|                               |             |  | 16170060 | 1,000 mL            |                  |
|                               |             |  | 26170035 | 100 mL              | Heat inactivated |
|                               |             |  | 26170043 | 1,000 mL            | Heat inactivated |
|                               |             |  | 10371029 | 500 mL              |                  |
| Donor Bovine Serum w/Iron     |             | 16030074   | 500 mL   |                     |                  |
| Donor Bovine Serum            |             | 16030108   | 1,000 mL |                     |                  |



## Ordering information<sup>††</sup>

| Specialty   | Gibco sera qualified for cell culture for specialty research and specific assays |                        |          |                           |
|---|--|------------------------|----------|---------------------------|
|   | Origin   | Cat. No.               | Size     | Additional qualifications |
| Fetal Bovine Serum, Embryonic Stem Cell Qualified   | United States  | 10439016 <sup>§§</sup> | 100 mL   |                           |
|   |  | 10439024 <sup>§§</sup> | 500 mL   |                           |
|   | New Zealand  | 16141061 <sup>§§</sup> | 100 mL   |                           |
|   |  | 16141079 <sup>§§</sup> | 500 mL   |                           |
|   |  | 30044333 <sup>§§</sup> | 500 mL   |                           |
| Fetal Bovine Serum, Mesenchymal Stem Cell Qualified | USDA-approved regions  | 12662002               | 50 mL    |                           |
|   |  | 12662011               | 100 mL   |                           |
|   |  | 12662029               | 500 mL   |                           |
|   | New Zealand  | 12665014               | 100 mL   |                           |
|   |  | 12665022               | 500 mL   |                           |
|   | Australia  | 12664017               | 100 mL   |                           |
|   |  | 12664025               | 500 mL   |                           |
| Fetal Bovine Serum, Charcoal Stripped               | USDA-approved regions  | 12676011 <sup>§§</sup> | 50 mL    |                           |
|   |  | 12676029 <sup>§§</sup> | 500 mL   |                           |
| Fetal Bovine Serum, Dialyzed                        | United States  | 26400036               | 100 mL   |                           |
|   |  | 26400044               | 500 mL   |                           |
|   | New Zealand  | 30067185               | 100 mL   |                           |
|   |  | 30067334               | 500 mL   |                           |
| Fetal Bovine Serum, Exosome-Depleted                | United States  | A25904DG               | 100 mL   |                           |
|   |  | A2720801               | 500 mL   |                           |
| Fetal Bovine Serum, Ultra-Low IgG                   | United States  | 16250086               | 100 mL   |                           |
|   |  | 16250078               | 500 mL   |                           |
|   | New Zealand  | 1921005PG              | 100 mL   |                           |
|   |  | 1921005PJ              | 500 mL   |                           |
| Horse Serum   | New Zealand  | 16050130               | 100 mL   |                           |
|   |  | 16050122               | 500 mL   |                           |
|   |  | 16050114               | 1,000 mL |                           |
|   |  | 26050070               | 100 mL   | Heat inactivated          |
|   |  | 26050088               | 500 mL   | Heat inactivated          |
| Lamb Serum  |  | 16070096               | 500 mL   |                           |
| Chicken Serum                                       |  | 16110082               | 500 mL   |                           |
| Goat Serum  |  | 16210064               | 100 mL   |                           |
|   |  | 16210072               | 500 mL   |                           |
| Porcine Serum                                       |  | 26250084               | 500 mL   |                           |
| Rabbit Serum  | United States  | 16120099               | 100 mL   |                           |
|   |  | 16120107               | 500 mL   |                           |



**gibco**

Find out more at [thermofisher.com/fbs](https://thermofisher.com/fbs)

**ThermoFisher**  
S C I E N T I F I C

**For *In Vitro* Diagnostic Use unless otherwise indicated.** © 2016 Thermo Fisher Scientific Inc. All rights reserved.  
All trademarks are the property of Thermo Fisher Scientific and its subsidiaries unless otherwise specified. The ISIA Seal  
of Quality Independently Audited is a trademark of International Serum Industry Association. **CO020829 0416**